

Brimrod Primary School Newsletter

Friday 5th March 2020



★ Welcome back! ★

Welcome

back!!!

We are all so excited to see you all back in school on Monday. It has been a long time coming but we are now hoping that we can get things back to normal whilst still staying safe. All the safety measures that were in place before Christmas are still in place including the staggered starts/finishes, different gates, extra cleaning and bubbles.

I want to thank all the parents, children and staff for their hard work when it comes to the home learning that we have been doing for the last two months. We have had some amazing work sent in by the children and we know that those children who completed their work will be much better placed to move forward when we return.

We know it hasn't been easy for parents and carers during this time but have spoken to everyone regularly and offered support where it was needed. Thank you again for your hard work.

Staggered Timings and Gates

Class	Start Time	Finish Time	Break time	Lunch Time	Gate
Nursery	8:45	11.55	-	-	Finsbury Street
Reception	9.00	3.15	-	12.00	Finsbury Street
Year 1	8.45	3.00	10.30	11.30	Westminster Street
Year 2	9.00	3.15	10.30	11.30	Westminster Street
Year 3	8.45	3.00	10.30	12.00	Corner Gate Holborn Street
Year 4	9.00	3.15	10.45	12.00	Corner Gate Holborn Street
Year 5	8.45	3.00	10.30	12.30	Middle Gate Holborn Street
Year 6	9.00	3.15	10.45	12.30	Middle Gate Holborn Street

News and Notices

Friday 5th March 2021

★ Welcome back! ★



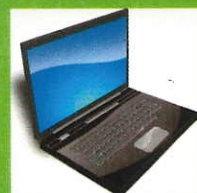
Return to School

All children will be returning to school on Monday 8th March at the time specified for their class. (please see times on the main page). You will have received the return to school booklet school. There are some changes from last time so please ensure that you have gone through it with your child. Please ensure that your child is in school uniform and brings their own water bottle into school which will stay in school and be re-filled by the children.



Continuing to Staying Safe

Please can I reiterate how important it is that we continue to follow the rules in the coming weeks and months even in the light of the government road map. Please ensure that you are wearing a mask when picking up/ dropping off and that the mask is worn properly over the nose and mouth. Masks must be worn until you leave the school premises. Thank you for your co-operation.



School Laptops

If you were allocated a school laptop during this lockdown period then this needs to be brought to the main office, with your child, on Monday morning so that Miss Clarke can sign them all back in. Please remember that this includes the charger and case. Thank you



School Lunches

We will be continuing to offer grab bags for lunch up until the Easter holiday. The will contain and sandwich (Tuna, cheese or the hot option of the day), a packet of crisps, piece of fruit and a cake/ biscuit). After Easter we will be going back to hot meals served in the hall following social distancing guidelines. Please ensure that your child has a water bottle as one is not provided with the grab bag.

Spring Term 2021 Dates

- Monday 8th March—Return to school for all pupils
- Thursday 18th March—Let's Count Day
- Friday 19th March—Comic relief Day (Dress up as a super hero/ princess and bring £1)
This will also be the party for those children who had lockdown birthdays in January
- Wb 22nd March—Author / Arts week
- 26th March—Brimrod World Book Day (Dress up as book characters)
This will also be the party for those children who had lockdown birthdays in February
- Monday 29th March—Class Orienteering Day
- Wednesday 31st March—Break up for the Easter Holidays / Easter Party
This will also be the party for those children who had lockdown birthdays in March

We will return to school after the holiday on Monday 19th April 2021

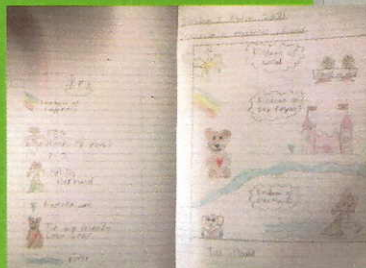
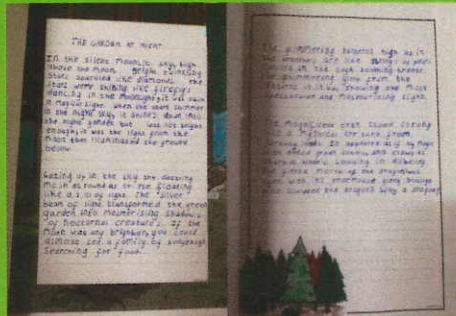


Please make sure that you look at the school website for updates, policies and home learning information.

www.brimrodprimary.rochdale.sch.uk



Home Learning



Children working in School

